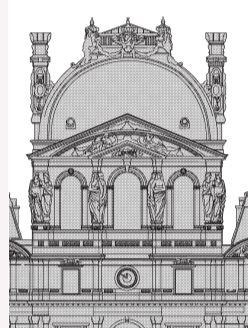




WELCOME TO THE LOUVRE

The origin of the Louvre dates back to the 1200s. Once a royal residence, it became a museum in 1793 during the French Revolution and is now home to artworks dating from the 7th millennium BC to the 1850s. **The collections are displayed on 5 levels, in 3 interconnecting wings named after three prominent figures from French history: Richelieu (1585–1642), chief minister of King Louis XIII, Sully (1559–1641), chief minister of King Henri IV, and Denon (1747–1825), first director of the Musée du Louvre.**



SULLY WING – LEVELS -1, 1 AND 2

The Pavillon de l'Horloge

Intended to serve as an introduction to your visit, the Pavillon de l'Horloge will help you understand the history of the Louvre palace and the presentation of the museum's collections. You will see how the original medieval fortress became a museum (Level -1), explore the diversity of its collections with a selection of artworks (Level 1) and discover the Louvre's latest news (Level 2).

PRACTICAL INFORMATION



Louvre Audio Guide

€5 rental of an Audio Guide (on New Nintendo 3DS™ XL) at the museum's ticket area; collect your guide on Level -1



Activities, tours and workshops
Group reception area under the Pyramid, Level -2

Studio, Level -1



Walking sticks, folding stools, pushchairs, baby carriers and wheelchairs are available free of charge for visitors who need them. Visitor assistance area, Level -2



Book and gift shop

The main book and gift shop in the Allée du Grand Louvre is open daily except Tuesdays from 9:30 a.m. to 6 p.m.



Cafés and restaurants

A 'Paul' bakery; 'Café Richelieu-Angelina' (with terrace); 'Bistrot Benoit', a traditional French restaurant; 'Goguette' cafeteria; Starbucks; 'Café Mollin' (with terrace); and takeaway canteens.



Follow us on social media to keep up to date with life at the Louvre.
www.louvre.fr



Museum

Open daily except Tuesdays from 9 a.m. to 6 p.m.
Rooms begin closing at 5:30 p.m.

To improve the visitor experience, renovations are currently underway in the museum. However, access is guaranteed to 90% of the permanent collections on weekdays and 100% at weekends.
Information: +33 (0)1 40 20 53 17

Dominique-Vivant Denon Research Centre (Porte des Arts)

A research and resource centre, open to individuals on Wednesdays, Thursdays and Fridays, 1 p.m.–5 p.m.

Viewing room for prints and drawings (Porte des Lions)

Open Monday to Friday from 1 p.m. to 6 p.m. by prior request. Contact: cabinet-des-dessins@louvre.fr

Visitor experience survey: GIVE US YOUR FEEDBACK



RICHELIEU WING

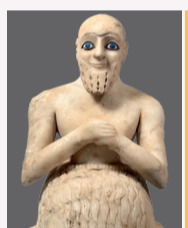


LEVEL -1 The Petite Galerie

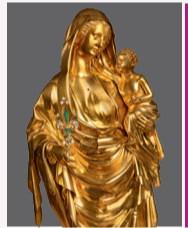
Learn to enjoy and understand art, its history and its techniques. From October to June every year, the Petite Galerie offers a new theme as a starting point for an exploration of the whole museum.



LEVELS -1 AND 0 Sculptures / France (500–1850)



LEVEL 0 Near Eastern Antiquities / Mesopotamia / Iran (5000 BC–AD 700)



LEVEL 1 Decorative Arts / Europe (500–1850)

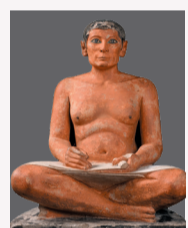
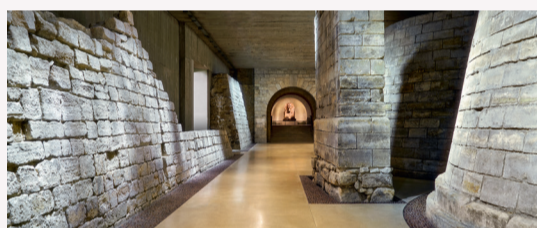


LEVEL 2 Paintings / Northern Europe (1350–1850)



LEVEL 2 Paintings / France (1350–1650)

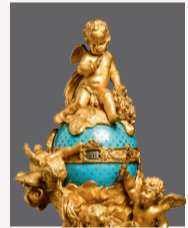
SULLY WING



LEVELS 0 AND 1 Egyptian Antiquities (4000–30 BC)



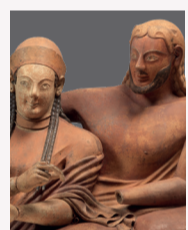
LEVEL -1 Cabinet of Prints and Drawings



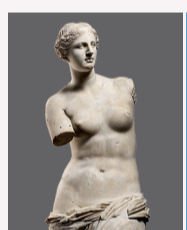
LEVEL 1 Decorative Arts / Europe (1650–1800)



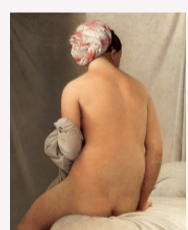
LEVEL 0 Near Eastern Antiquities / Iran / The Levant / Arabia (7500 BC–AD 700)



LEVEL 1 Greek, Etruscan and Italic Antiquities (1000 BC–AD 500)

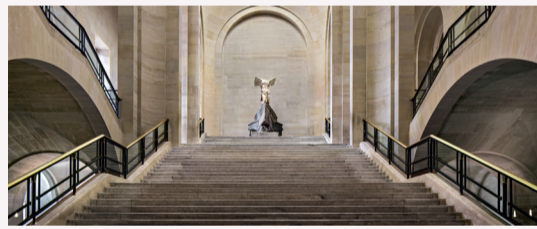


LEVEL 0 Greek Antiquities (500–30 BC)



LEVEL 2 Paintings / France (1650–1850)

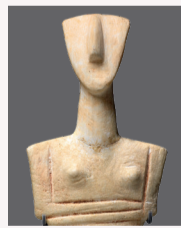
DENON WING



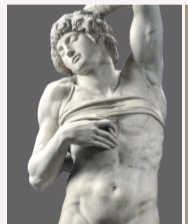
LEVELS -1 AND -2 Near Eastern and Egyptian Art (30 BC–AD 1800)



LEVELS -1 AND -2 Islamic Art (700–1800)



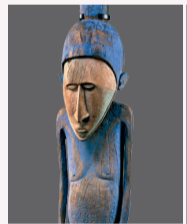
LEVEL -1 Greek Antiquities (6500–500 BC)



LEVELS -1 AND 0 Sculptures / Europe (500–1850)



LEVEL 0 Roman Antiquities (100 BC–AD 500)



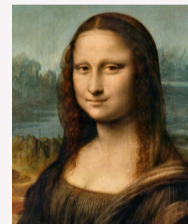
LEVEL 0 Arts of Africa, Asia, Oceania and the Americas (700 BC–AD 1900)



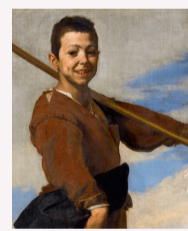
LEVEL 1 Paintings / France (1780–1850)



LEVEL 1 The Galerie d'Apollon / The French Crown Jewels



LEVEL 1 Paintings / Italy (1250–1800)



LEVEL 1 Paintings / Spain (1400–1850)



LEVEL 1 Paintings / Great Britain / United States (1550–1850)

ALSO AT THE LOUVRE...



The Carrousel and Tuileries Gardens

The Carrousel Garden is laid out around the triumphal arch of Napoleon I (reigned 1804–1815), which once marked the entrance to the Tuileries palace. Beyond the Carrousel is the famous Tuileries Garden, a masterpiece of garden design with its beautiful flower beds and shaded groves. The two gardens also form an open-air sculpture museum.

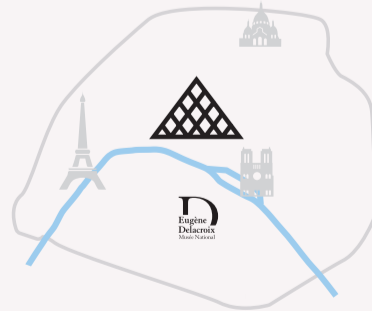


The Musée National Eugène-Delacroix

Across the river Seine, just a 15-minute walk away from the Louvre, visit the apartment and studio where Eugène Delacroix spent the last years of his life. In this historic building, located in the heart of Saint-Germain-des-Près, discover a unique collection of artworks by the great Romantic painter and his contemporaries.

Admission free for a same-day or next-day visit on presentation of the Louvre admission ticket. Open daily, except Tuesdays, from 9:30 a.m. to 5:30 p.m. and until 9 p.m. on the first Thursday of each month.

6, rue de Fürstenberg, 75006 Paris
www.musee-delacroix.fr/en
#MuseeDelacroix, @MuseeDelacroix



From the Louvre to the Carrousel and Tuileries gardens

5 minutes

From the Louvre to the Musée Eugène-Delacroix

15 minutes (BUS 39 95)



SUPPORT THE LOUVRE

Support the activities of the world's greatest museum by making a donation at donate.louvre.fr.

Thank you for your generosity!



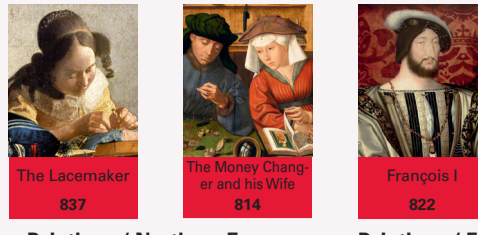
American Friends of the Louvre – a not-for-profit public charity – was founded to strengthen ties between the Louvre and its American public. For more information on individual membership programmes or on how to make a gift, go to: www.aflouvre.org.

Photo credits:
Richelieu wing: © 2015 Musée du Louvre / Michel Denancé, © Musée du Louvre, dist. RMN - Grand Palais / Raphaël Chpault, © RMN - Grand Palais (Musée du Louvre) / Stéphane Marchal, © Musée du Louvre, dist. RMN - Grand Palais / Hervé Lewandowski, © Musée du Louvre, dist. RMN - Grand Palais / Franck Botton, © 1997 Musée du Louvre / Pierre Philibert, © 2006 Musée du Louvre / Angèle Dequeur, © RMN - Grand Palais (Musée du Louvre) / Tony Querec.
Sully wing: © 2016 Musée du Louvre / Michel Denancé, © 2015 Musée du Louvre / Thierry Olivier, © 2015 Musée du Louvre / Christian Décamps, © Musée du Louvre, dist. RMN - Grand Palais / Georges Poncet, © Musée du Louvre, dist. RMN - Grand Palais / Philippe Fuzeau, © Musée du Louvre, dist. RMN - Grand Palais / Angèle Dequeur, © RMN - Grand Palais (Musée du Louvre) / Franck Raux, © RMN - Grand Palais (Musée du Louvre) / Stéphane Marchal, © Musée du Louvre, dist. RMN - Grand Palais / Philippe Fuzeau.
Denon wing: © 2015 Musée du Louvre / Michel Denancé, © RMN - Grand Palais (Musée du Louvre) / Tony Querec, © RMN - Grand Palais (Musée du Louvre) / Benoit Touchard / Michel Urdad / Tony Querec, © Musée du Louvre, dist. RMN - Grand Palais / Philippe Fuzeau, © RMN - Grand Palais (Musée du Louvre) / Hervé Lewandowski, © Musée du Louvre, dist. RMN - Grand Palais / Raphaël Chpault, © Musée du Louvre, dist. RMN - Grand Palais / Georges Poncet, © 2007 Musée du Louvre / Angèle Dequeur, © RMN - Grand Palais (Musée du Louvre) / Jean-Claude Bezzis, © Musée du Louvre, dist. RMN-Grand Palais.
Graphic design: Dream On / Museum Gallery Interpretation Subdepartment / Graphic and Digital Interpretation Division / Printing: Vincent Imprimerie, September 2021.



RICHELIEU

Rooms 800 to 864

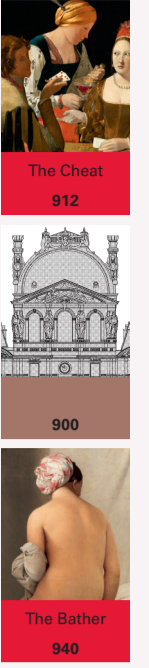


Paintings / Northern Europe

Paintings / France

SULLY

Rooms 900 to 952

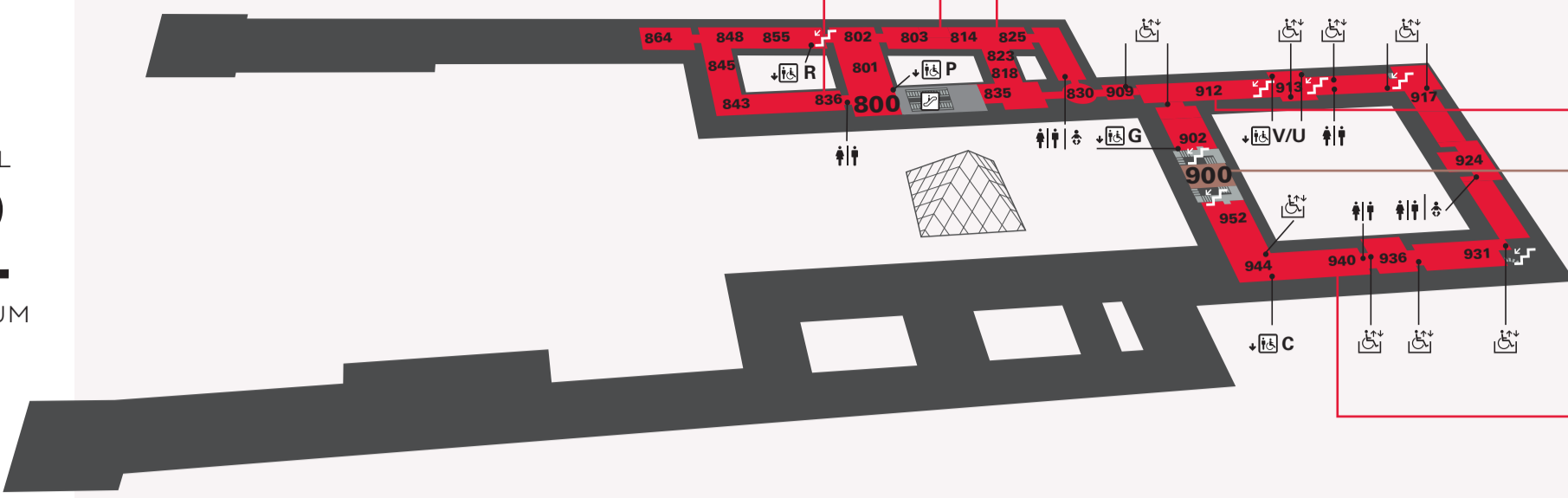


Paintings / France

History of the Louvre

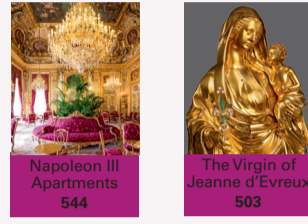
Paintings / France

LEVEL 2 MUSEUM



RICHELIEU

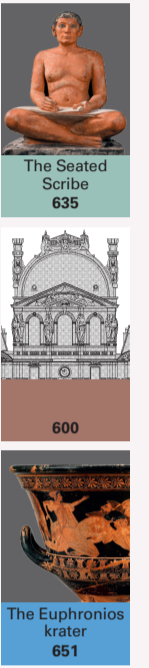
Rooms 500 to 564



Decorative Arts / Europe

SULLY

Rooms 600 to 663

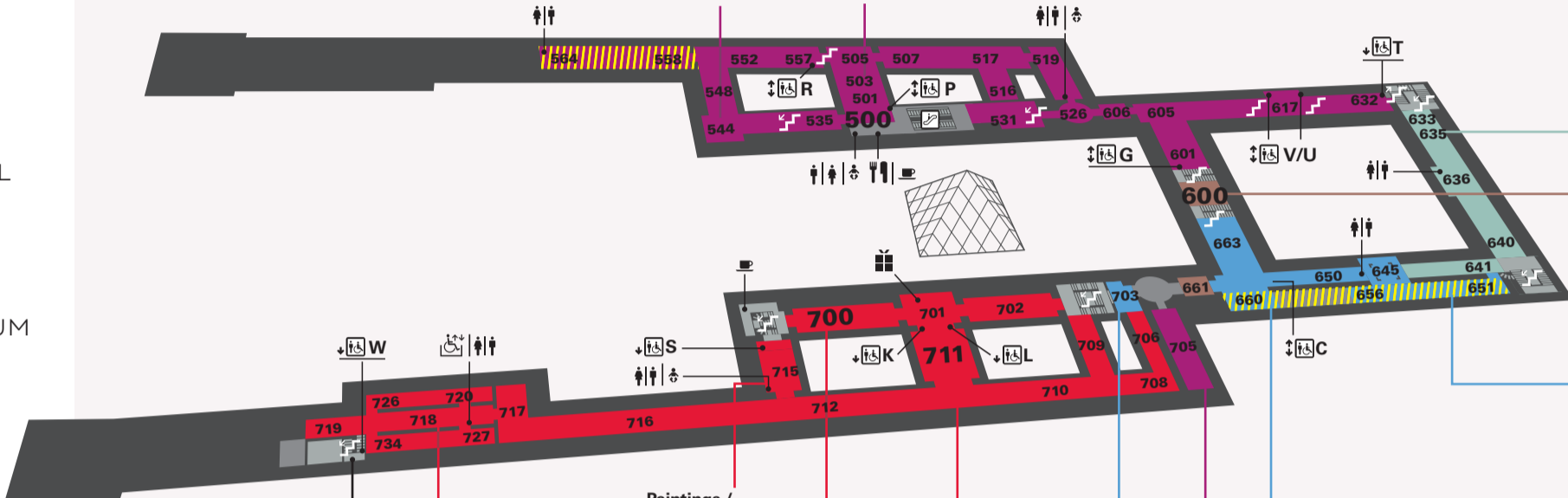


Egyptian Antiquities

History of the Louvre

Greek and Roman Antiquities

LEVEL 1 MUSEUM



DENON

Rooms 700 to 734



Paintings / Spain



Paintings / Great Britain / United States



Paintings / France



Paintings / Italy



Greek Antiquities



The Galerie d'Apollon



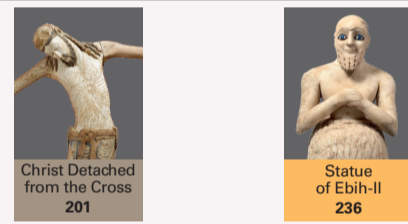
Etruscan and Italic Antiquities

To the Arts of Africa, Asia, Oceania and the Americas

Rooms closed for renovation

RICHELIEU

Rooms 200 to 236



Sculptures / France

Near Eastern Antiquities

SULLY

Rooms 300 to 348

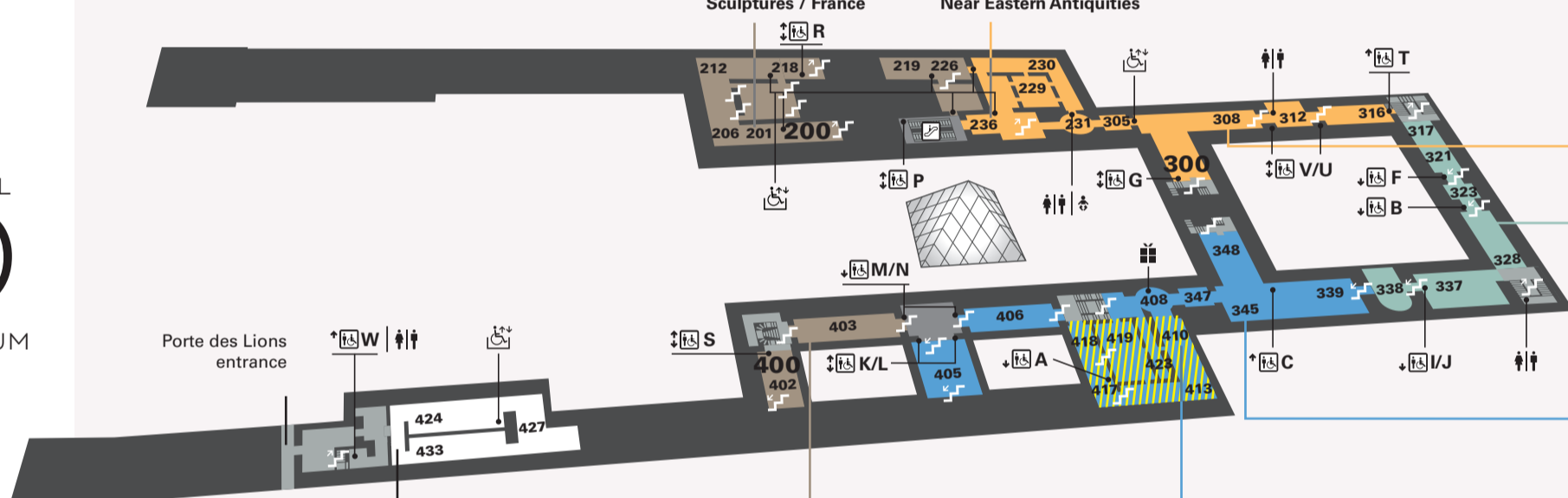


Near Eastern Antiquities

Egyptian Antiquities

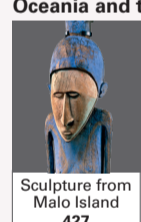
Greek Antiquities

LEVEL 0 MUSEUM



DENON

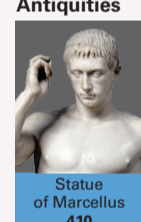
Rooms 400 to 433



Sculptures / Europe



Sculptures / Europe



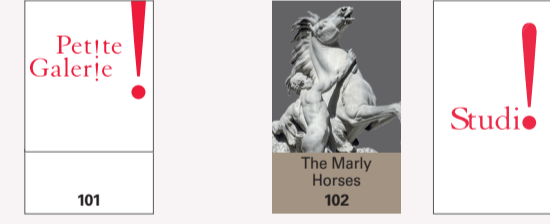
Roman Antiquities

Access via Level 1 Arts of Africa, Asia, Oceania and the Americas

Rooms closed for renovation

RICHELIEU

Rooms 100 to 106



The Petite Galerie

Sculptures / France

Studio

SULLY

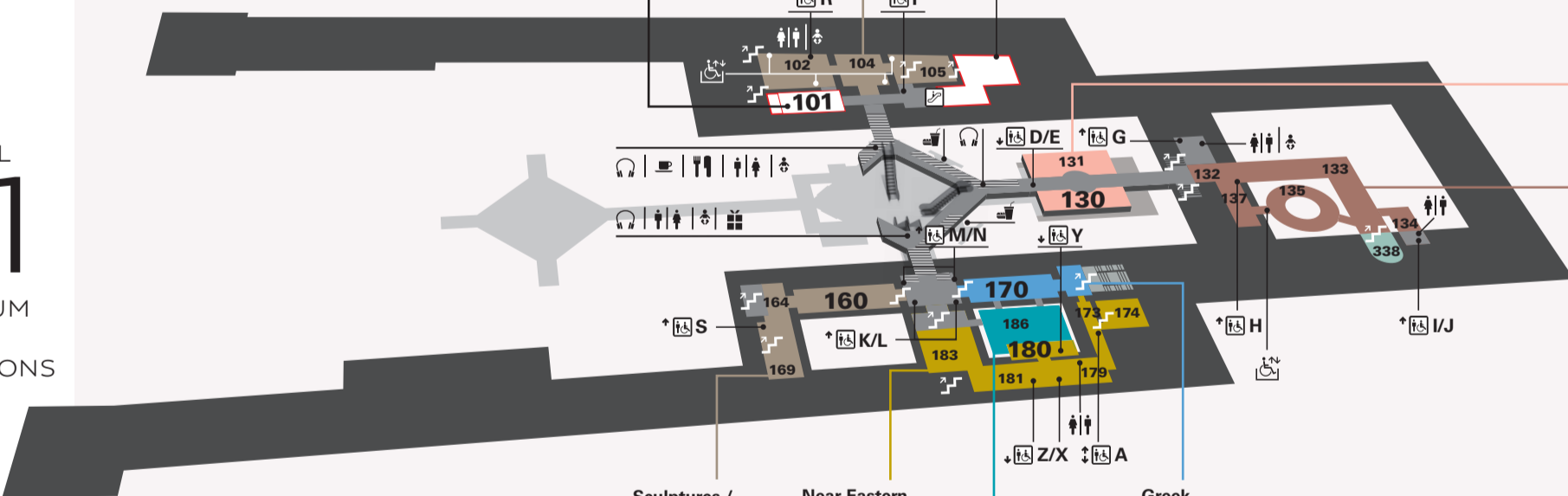
Rooms 130 to 137



Cabinet of Prints and Drawings

History of the Louvre

LEVEL -1 MUSEUM AND EXHIBITIONS



DENON

Rooms 160 to 187



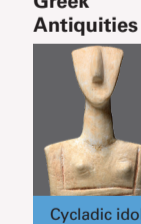
Sculptures / Europe



Near Eastern and Egyptian Art



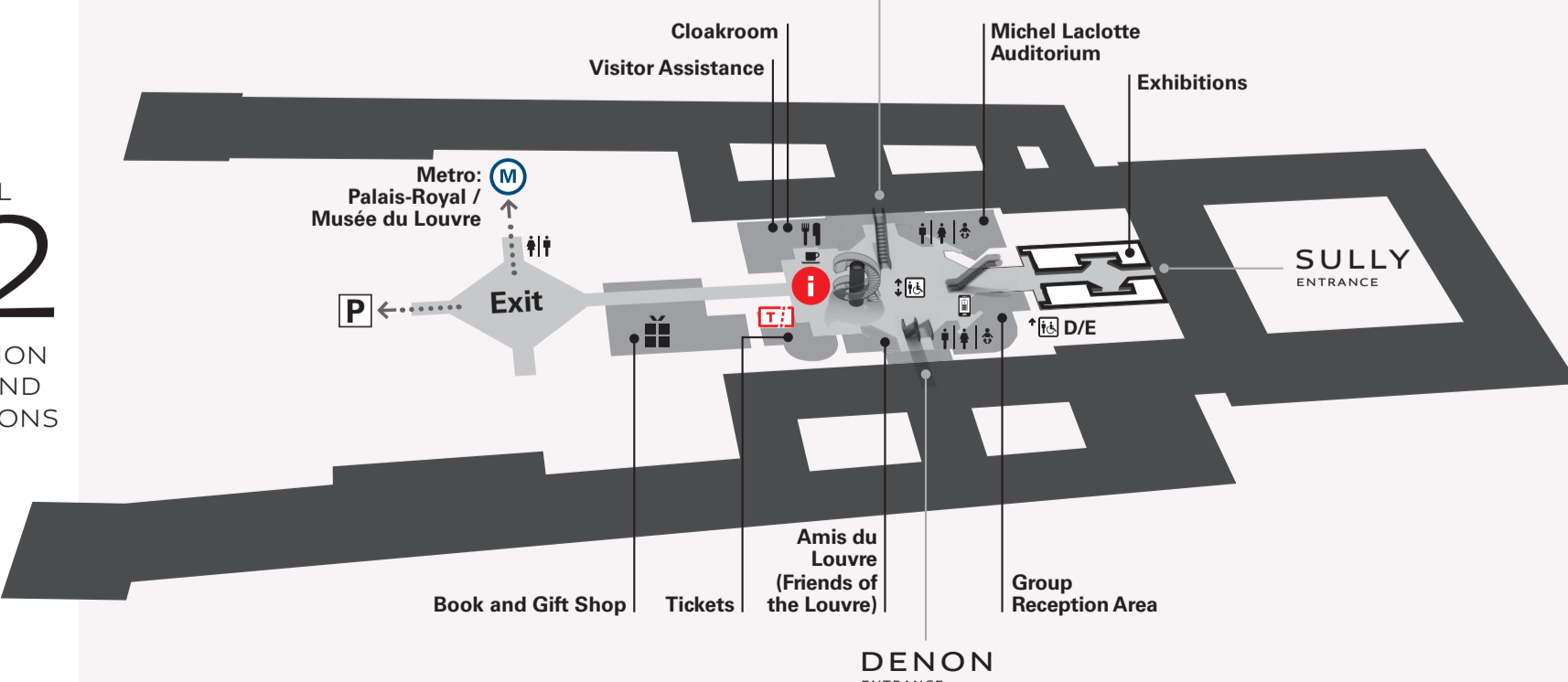
Islamic Art



Greek Antiquities

RICHELIEU ENTRANCE

LEVEL -2 RECEPTION AREA AND EXHIBITIONS



DENON ENTRANCE

These rules aim to help enhance and protect our heritage and make the museum visit a pleasant experience for everyone.

Room openings and museum hours are subject to change due to the pandemic. More information: www.louvre.fr.